

# SCHEDULE "A"

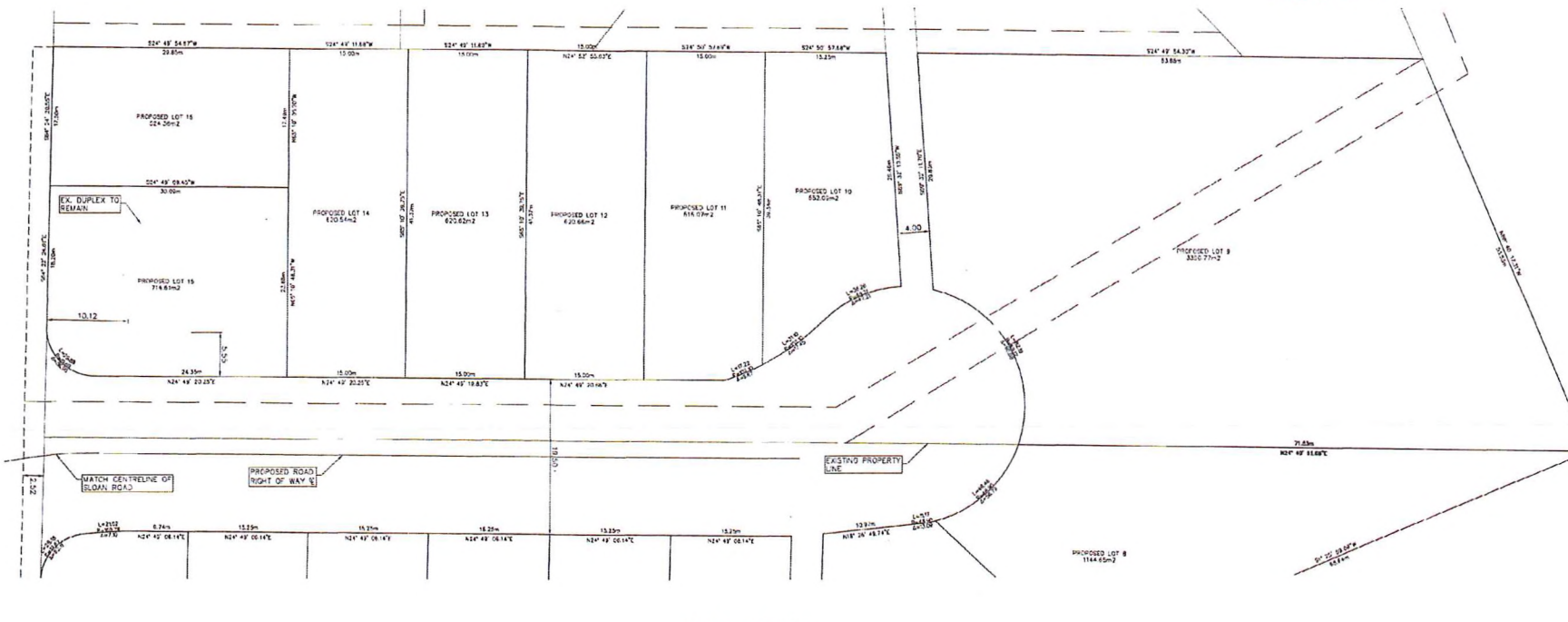
PROPOSED SUBDIVISION PLAN ON LOT 1, SECTION 4  
WELLINGTON DISTRICT, PLAN 7577  
4261-4271-4273 JINGLE POT ROAD, NANAIMO BC

**CITY OF NANAIMO  
PRELIMINARY LAYOUT  
ACCEPTANCE**

**NOTES:**

1. ALL ELEVATIONS ARE TO GEODETIC DATUM
2. ALL HORIZONTAL DISTANCES ARE METERS
3. ALL EXISTING STRUCTURES AT SITE TO BE REMOVED UNLESS NOTED OTHERWISE

2018-APR-25 *Tris Hitem*  
Date Approved By  
2019-APR-25  
Expiry Date



PROPOSED LOT LAYOUT  
0 5 10m  
1:250

RECEIVED  
2018 APR 25  
CITY OF NANAIMO  
ENGINEERING

<p>DATE: 1/20/18 COMPILED BY: [Signature] DRAWING NO: C01</p>		<p>PROJECT: 8 LOT SUBDIVISION 4261-4271-4273 JINGLE POT ROAD S. 2017289</p>	
<p>Drawn by: MHT Checked by: CJK Approved by: FWI</p>	<p>DATE: 1/20/18 DRAWN BY: MHT CHECKED BY: CJK APPROVED BY: FWI</p>	<p><b>CASCARA</b> CONSULTING ENGINEERS LIMITED #206-335 Wazey Street Nanaimo, BC V9R 2T5 Phone: 250.561.2304 Email: info@cascara.ca</p>	

SUBD/289